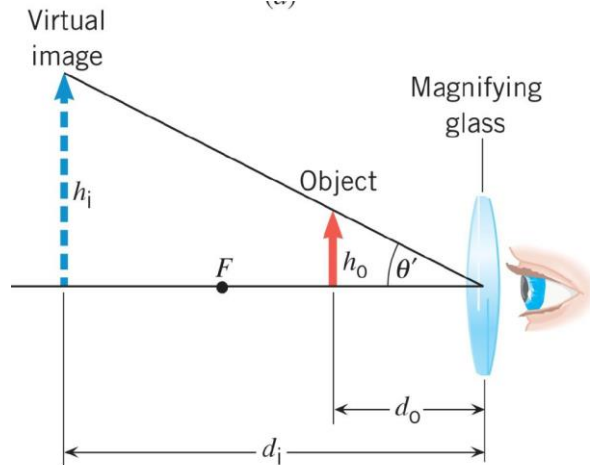


35. A jeweler whose near point is 72 cm from his eye uses a magnifying glass as in the figure below to examine a watch. The watch is held 4.0 cm from the magnifying glass. Find the angular magnification of the magnifying glass.



Angular Magnification can be expressed as

$$M_{\theta} = \frac{N}{o} = \frac{72 \text{ cm}}{4.0 \text{ cm}} = 18x$$

$M_{\theta} = 18x$

[Dr. Donovan's Classes](#)
Page

[Dr. Donovan's PH 202](#)
Homework Page

[NMU Physics](#)
Department Web Page

[NMU Main Page](#)

Please send any comments or questions about this page to ddonovan@nmu.edu

This page last updated on January 7, 2021